

Biopsy Deposits by J. Manzanares M.D.

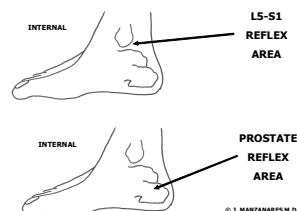
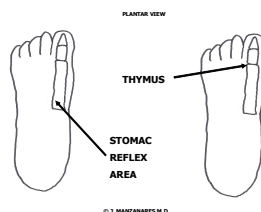
All document in copyrighth J. Manzanares

Foot “deposits” are defined from the functional view point as follows:

A “deposit” manifests itself when there is an imbalance in an organ. As a response to the lost of equilibrium in any organ, deposits are formed in the area of the foot that corresponds to that organ.

In order to define a “deposit” from the view point of his tissue composition two different theories will be proposed. One theory supports the idea that a deposit is made out of organic matter. The other theory supports the idea that a deposit is made out of inorganic matter (calcium, crystals...) In order to find the answer to this question biopsies from several deposits were taken from 4 different patients.

1. A sample was taken from a patient diagnosed with prostate cancer.
2. A sample was taken from a patient with gastro-duodenal ulcer.
3. A sample was taken from a patient with L5-S1 disc hernia.
4. A sample was taken from an atopic patient suffering from a series of medical problems (asthma, rhinitis and eczemas)



Method:

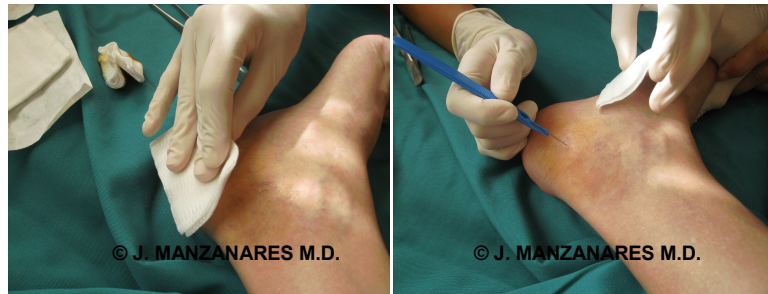


Two samples were collected from each patient. One sample was taken from an area of the foot containing a deposit while another sample was taken from an adjacent area without deposits. These two samples were collected in order to compare the tissue composition in the area of deposit vs. the area containing no deposits

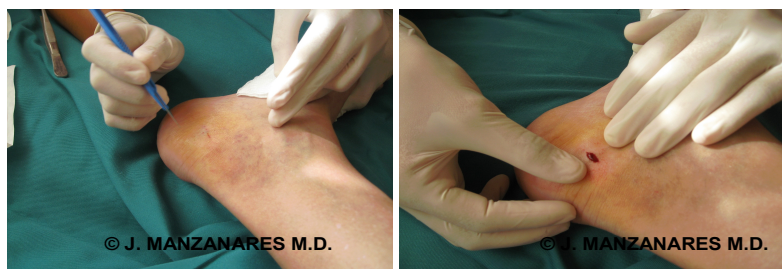
These images show how the samples of tissue were collected from the deposit and the adjacent deposit-free tissue in a patient diagnosed with prostate cancer. First, using palpation, the deposit area is found and marked.



Second, with the help of a hypodermic syringe we inject a local anesthetic in order to numb the area.



Third, an incision is made in order to collect the biopsy sample.

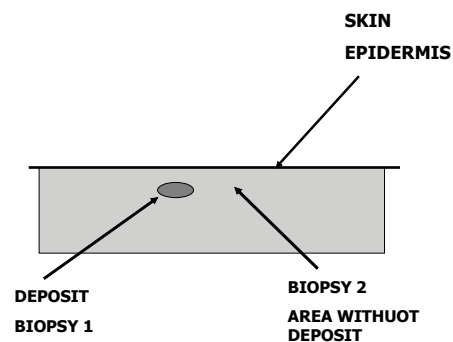




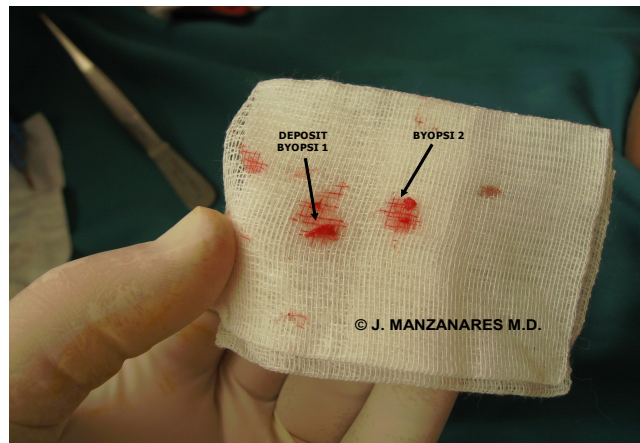
Fourth, two samples were taken:

- a) Biopsies 1. These biopsies were collected from an area **WITH** deposits
- b) Biopsies 2. These biopsies were taken from an area **WITHOUT** deposits.

All samples (4 samples containing deposits and 4 samples that did not contain deposits), were analyzed under the microscope in order to establish their composition. The results are as follows.



© J. MANZANARES M.D.



- a) **Biopsies 1.** 42% nerve tissue
28% vascular tissue
30% connective tissue
- b) **Biopsies 2.** 8% nerve tissue
28% vascular tissue
64% connective tissue

1.1.Conclussions

First conclusion: The NERVE TISSUE, made of peripheral sensitive nerve fibers, is an intrinsic part of the "mechanism" in which reflexology bases its principles. Or in other words thanks to that proliferation of nerve fibers "reflexology can do its work".

Second conclusion: The "deposits" ARE NOT CRISTALS, THEY ARE NOT INORGANIC MATTER. Definitely, we must start talking about **deposits** and abandon the term crystals as this term can lead us to confusion and does not adhere to what the scientific experience has demonstrated.

Third conclusion: The DEPOSITS are found in the SUBCUTANEOUS tissue.